

## Applications

The Rail Clip & Prism is designed for use with automated total stations (AMTS) to monitor railroad tracks for settlement, heave, lateral displacements, and changes in super-elevation.

## Installation

There are two components: a rail clip and an L-bar mini-prism. The only tool needed for installation is a hex wrench.

1. Fit the rail clip to the rail. Tighten the hex screws until the clip is firmly attached.
2. Attach the L-bar, adjusting its angle so that the prism will directly face the AMTS.
3. Attach the prism to the L-bar, aiming it at the AMTS.

## Advantages

- **High Performance:** Coated optics for better performance.
- **Durable:** Simple, waterproof construction with no moving parts or electronics.
- **Quick Installation:** Fit rail clip and tighten screws. No drilling or wiring required.
- **Cost Effective:** Low cost per monitored point compared to conventional sensors.

## Specifications

**Rail Clip:** Power-coated steel, stainless steel screws. Available in 5.5 or 6-inch sizes.

**L-Bar Bracket:** 3 inch arms, black anodized aluminum.

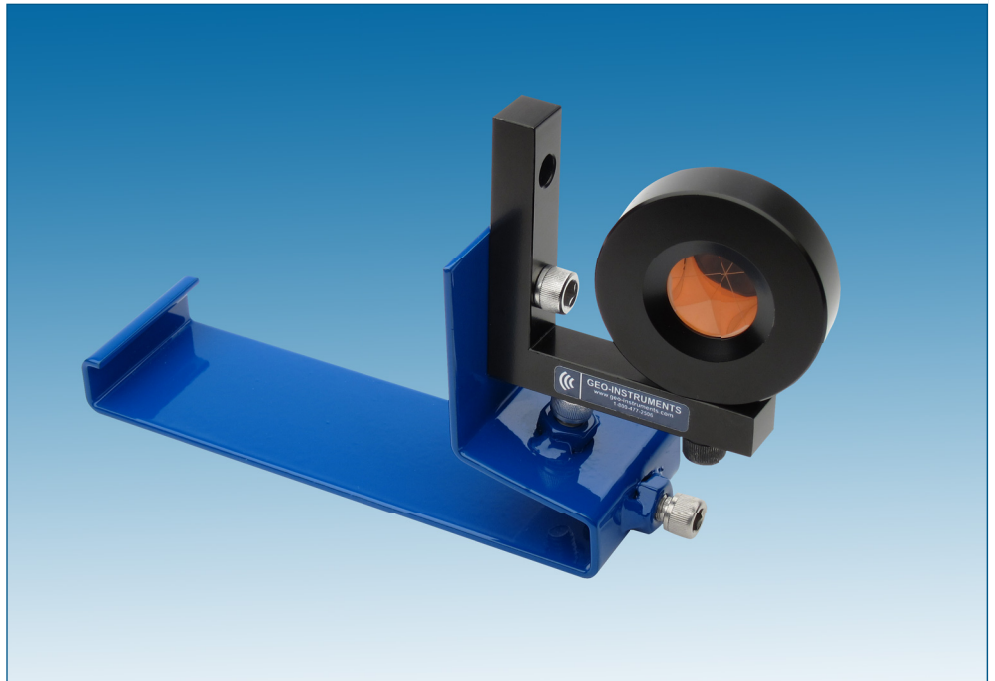
**Mini Prism:** 25 mm optical glass with anti-reflection and copper coatings.

**Mini Prism Offset:** -25.5 mm.

**Mini Prism Offset for Leica:** +8.92 mm.

## Part Numbers

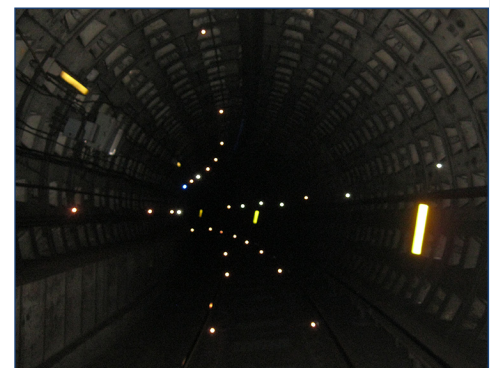
- Rail Clip for 5.5" Rail ..... TSP710  
 Rail Clip for 6" Rail..... TSP720  
 L-Bar Mini Prism, 10 ..... TSP110



Rail Clip and L-bar Mini Prism



Monitoring Tracks



Monitoring Tracks and Tunnel