

QuickView Data Visualization

The GeoCloud data management system can acquire hundreds of measurements per hour. QuickView provides quick graphical access to those measurements via a secure project website.

Quickview Advantages

Secure Access: The QuickView website supports two-factor authentication and three levels of user permissions. Authorized users get quick, secure access to data wherever there is an internet connection.

Continuous Availability: QV operates 24/7, automating data retrieval, importing and processing readings, checking for alarms, and generating plots and reports.

Consistent Calculations: QV processes incoming readings by applying calibration factors, baseline readings, and calculation instructions stored in a sensor table.

Consistent Presentations: Views, plots, and reports can be preconfigured to ensure consistent scales, terminology, and sensor selection. Values are updated automatically.

Wide Compatibility: GeoCloud's specialized preprocessing applications extend QV's functionality, provide compatibility with nearly any type of monitoring device, and eliminate data silos and the need to switch applications to view specialized data.

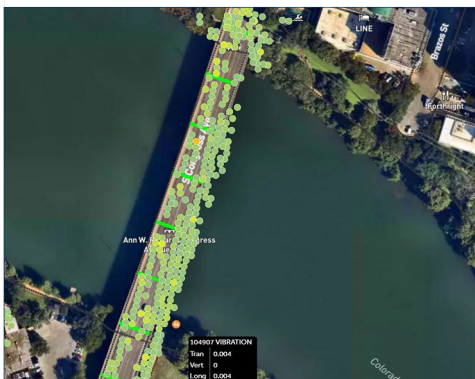
Centralized Data Storage: QV stores all types of project-related data to maintain traceability and simplify access, including action plans, calibration sheets, reports, journal entries, borehole logs, and photos.



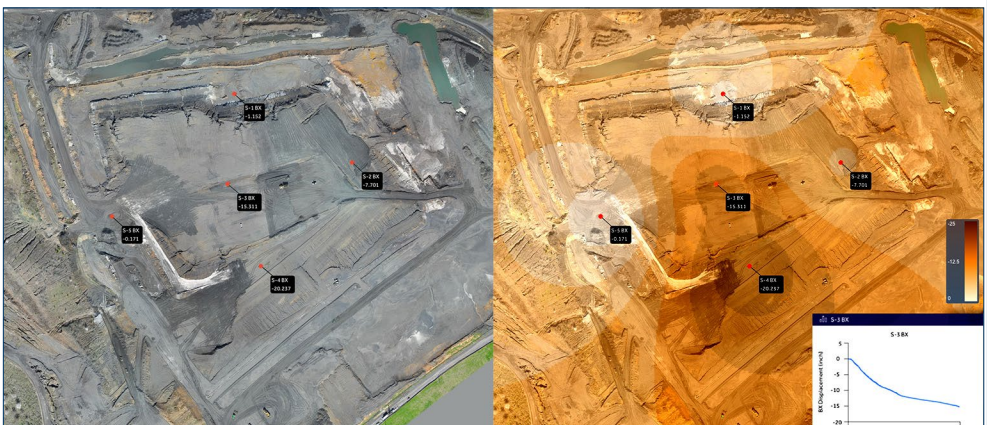
QuickView can provide multiple views of the site. CAD drawings, images, or maps can serve as base layers for a view. The screenshot above uses a satellite view. Layers for sensors and graphs are created automatically as needed.



Sensors have their own layer. Labels show sensor ID, current reading, and alarm status. The magnified inset shows sensors with alarm flags. Views can be zoomed and each type of sensor can be toggled on and off for easier viewing.



QuickView can display processed InSAR data



The view on the left shows five settlement sensors. The same view on the right has a contour overlay that provides a visual understanding of settlement. The small trend plot at right pops up when the cursor is rolled over a sensor.

