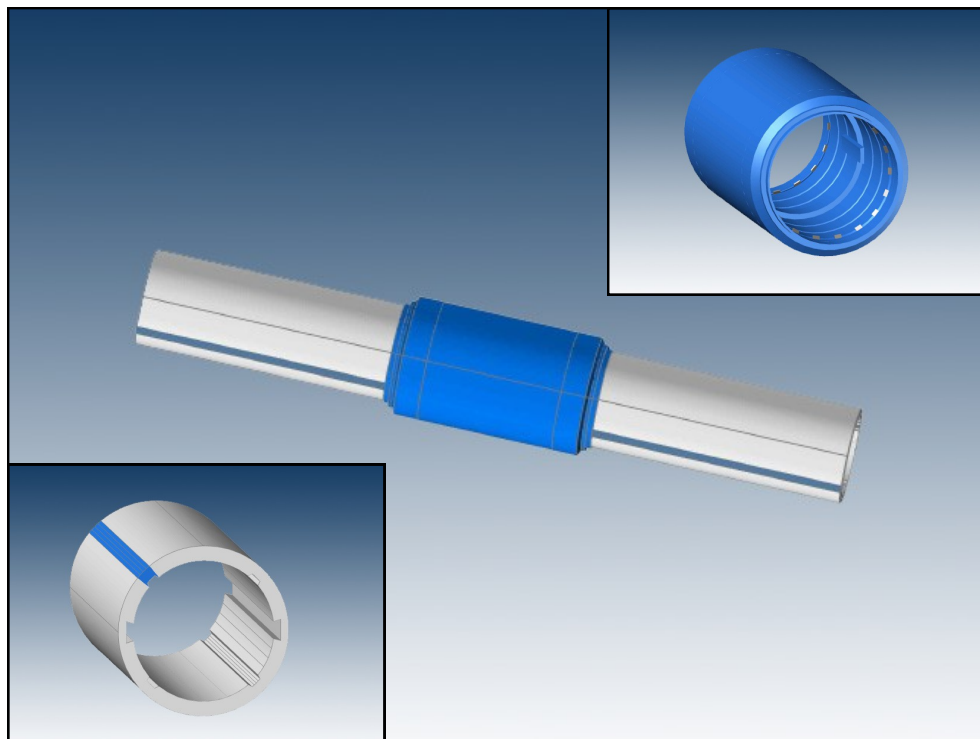




INSTRUMENTS

Geo Blue Stripe Inclinerometer Casing



Geo Blue Stripe Inclinerometer Casing and locking coupling.

Applications

Inclinerometer casing is a special purpose guide tubing used in traversing probe inclinerometer installations to provide lateral or horizontal deformation measurements in soil, rock and structures (see separate data sheet for traversing probe inclinerometers).

Geo Blue Stripe inclinerometer casing serves three purposes:

- Provides alignment and ac

cess for the traversing inclinerometer probe, allowing it to obtain subsurface angle measurements.

- Controls the orientation of the probe with precision internal grooves, designed to work with all commercially available inclinerometer probes.
- Conforms to movement of the surrounding ground, or installed structure.

Blue Stripe Advantages

Cut and Couple Anywhere in Casing Length:

Blue stripe uses an external coupling and casing with internal alignment splines to allow coupling anywhere through the length of casing. No factory casing ends are required, minimizing waste in the field.

Strength:

Thanks to the innovative internal alignment design, Geo Blue Stripe Inclinerometer Casing has unsurpassed tensile, leakage and torque characteristics.

Low Spiral Tolerance:

Blue Stripe casing has less than 0.3 degree spiral per 10' section.

Easy Casing Alignment:

The signature external blue stripe provides installers an easy visual alignment during borehole installation. Installers can maintain groove alignment throughout casing installation, simply by looking at the external blue stripe, not just at the casing ends as with other casings designs.

Main Office

24 Celestial Drive, Suite B
Narragansett RI, 02882
Phone 800.477.2506
Fax 401.633.6021

Northwest Office

2100 196th Street SW, Suite 109
Lynnwood WA, 98036
Phone 800.477.2506
Fax 401.633.6021

We make it easy to
get the data you need.

www.Geo-Instruments.com

sales@Geo-Instruments.com



Adaptable:

The Blue Stripe coupling and optional alignment tool allows users to convert from other casing designs to Blue Stripe without the hassle of antiquated alignment tools and pull strings.

Blue Stripe Coupling options:**O-Ring Sealed:**

The Blue Stripe Coupling is available with an o-ring sealing and high strength mechanical retaining mechanism with pressure seal. Additionally, there is the added convenience of easy field disassembly for temporary projects, or if bore holes collapse and the casing must be retrieved from them.

Solvent Welded:

For permanent applications where disassembly is not required, the optional solvent weld coupling provides a unique choice. During solvent welding the coupling holds the casing ends together with an internal retaining ring. This ensures a positive bond without causing the casing to push out that is common on other solvent weld casings.

Casing Specifications:

OD = 2.75 inches

ID = 2.32 inches

Groove distance = 2.40 inches

Standard casing length is 10 feet, 20 foot lengths on request.

Casing Material: Virgin High Quality ABS plastic resins

Removable Coupling Material: Virgin High Quality ABS plastic resins, Buna N O-ring, and stainless steel retaining ring

Solvent Weld Coupling Material: Virgin High Quality ABS plastic resins, and stainless steel retaining ring

Coupled Joint Tensile Strength: 1500 lbs

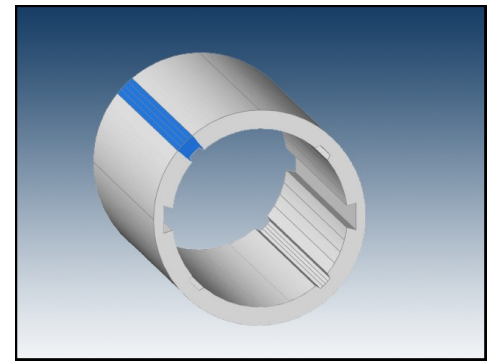
Pressure 250 psi.

Temp rating: -29 to 88 °C

Spiral: less than 0.3° per 10' section

Design and Manufacture:

Geo Blue Stripe casing is designed and manufactured in the USA.

**Warranty:**

Geo-Blue Stripe Inclinometer Casing has a one year limited warranted for manufacturing defects. If you have any problems please contact us for immediate resolution.

Ordering Information:

2.75" x 10 foot Blue Stripe Casing
Part Number GBS275-10

2.75" x 20 foot Blue Stripe Casing
Part Number GBS275-20

2.75" O-ring Seal Blue Stripe Coupling
Part Number GBS-275ORS

2.75" O-ring Seal Blue Stripe Coupling removal tool
Part Number GBS-275ORS-1

2.75" Solvent Weld Blue Stripe Coupling
Part Number GBS-275SW

2.75" Blue Stripe Coupling Alignment Tool
(specify casing mfg to adapt to at time of order)

Part Number GBS-275XX

