

GEO-PAVEMENT GAUGE

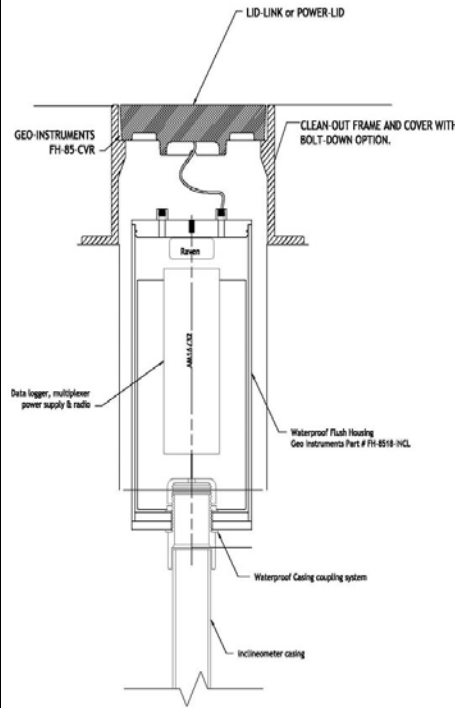
PAVEMENT TENSION/COMPRESSION MEASURING DEVICE

Applications:

- Strain measurement in asphalt, concrete and other road construction methodologies.
- Lid link logger system compatible with most all geotechnical instruments.

Description:

The GEO-Pavement Gauge consists of a corrugated stainless steel semi rigid tube housing a stainless steel rod attached to a bondable pavement anchor in the subject material, and a linear potentiometer on the other end for real time field measurements. The complete system is packaged for waterproof operations, and designed to withstand the temperature during pav-



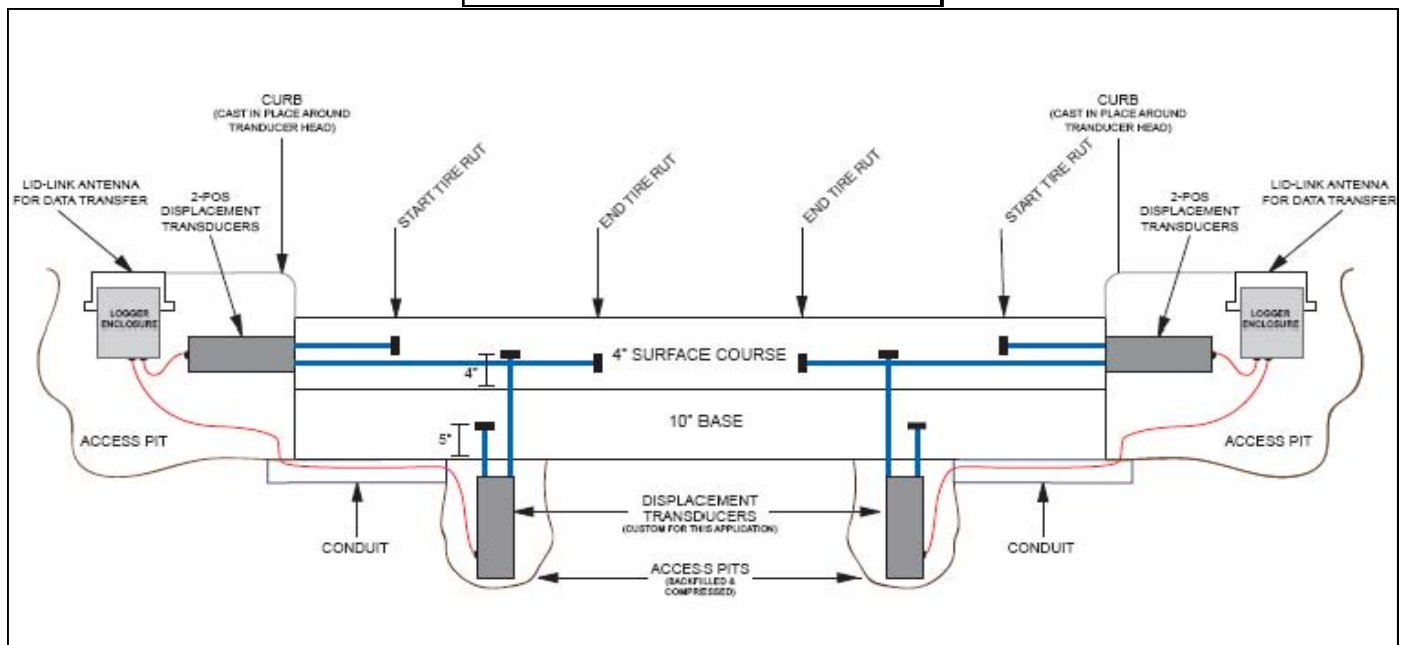
Above: Typical Lid Link Cross Section.

ing, and mechanical aspects of vibration compaction.

The system is embedded in the pavement material. The Stainless Steel corrugated sheath provides a friction free protective sleeve for the inner 0.25" stainless steel rod to remotely measure changes caused by pavement shoving, and rutting after pavement cure.

The result is a field rugged sensor with good linear response and accuracy.

The GEO-Pavement Gauge has excellent long term stability and water resistance, and retains this accuracy when used in asphalt, embedded in concrete, or gravel.



Phone: 800-477-2506
 Fax: 401-633-6021
 E-mail: sales@geo-instruments.com

24 Celestial Drive
 Suite B
 Narragansett, R.I. 02882

Helping you get the data you need.



Specifications:

Range: 1, 2, 4, 6, inches and custom ranges on request.

Resolution: 0.001inch

Accuracy: 1% F.S.

Gauge Factor: 0.6digits/Volt DC

Circuit: Three-wire-quarter bridge

Environmental:

Maximum Water Pressure 5psi

Temperature Effect: < .000001/ °C (-10 to + 75°C)

Power: Over 1 year on special linear output lithium power pack, 12VDC, (see lidlink datasheet for antenna/logger housing)

Mechanical:

Measurement Rod Length: To suit site conditions, contact us for modified conditions.

Diameter (measurement rod/sheath): Less than 1"

Head: 4" OD, x 18"-24" long

Material: 0.25 316 SS rod, inside 0.75" 316 corrugated SS tube, with PVC housing.

Phone: 800-477-2506
Fax: 401-633-6021
E-mail: sales@geo-instruments.com

24 Celestial Drive
Suite B
Narragansett, R.I. 02882

*Helping you get the
data you need.*

